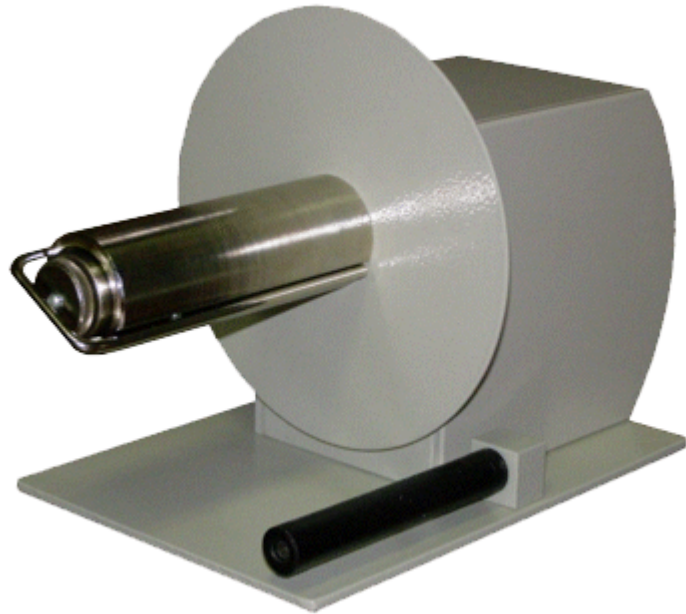


## UN-215 Universal Labels Rewinder

### UN-215 External Label Rewinder (fast)

The UN series external winders are designed to complement label printers roll-fed labels. The labels are wound directly onto the mandrel or onto a 40mm cavity attached to the mandrel with an L-shaped clamp (optional accessory) or to the cavity 76mm attached with a reducer (optional accessory). Can then be fed into label applicators, automatic label applicators and similar devices. The rollers are of all-metal construction. Models UN-115/215/220 wind via a friction clutch with adjustable tension torque.



Op  
ti

# Technical Description

## Functionality & Operation

150mm

38mm

2 ot./s

Print speed 250mm/sec (10 ips)

## Electrical

Power Source Adapter 220V 50Hz, 15 VAC

## Mechanical

110mm

Weight 3.55kg

Dimensions Width: 167mm, Height: 150mm Length: 267mm

## CODEWARE, s.r.o.

Jaromírova 484/37  
120 00 Praha 2 - Nusle  
IČ: 61061395, DIČ: CZ61061395

+420 222 562 444  
codeware@codeware.cz  
<https://www.codeware.cz/>

